

Digital duplicator

RISO SF5130 **ET** U

130 ppm High-speed printing

300x600 dpi High-resolution

Legal paper size

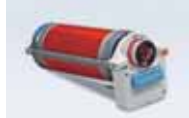
Speed Forward Edition II



An upgraded print system for use in various settings

RISO SF 5130

Optional Accessories



RISO FII Type Drum
Enables color printing.
(Case included)



RISO Auto Document Feeder AF-VII
Scans multiple documents automatically.



RISO Job Separator IV; NIII
Enables easy separation of printed sheets by inserting tape strips.



Card Feed Kit
Compatible with paper weight 27-lb bond to 221-lb index (100 gsm to 400 gsm).
*Please contact a RISO sales representative for the kinds of paper that may be used.



RISO Stand D Type III
Deluxe and with doors for convenient storage with a neat appearance.



RISO Stand N Type III
Sturdy open-front stand also offers convenient storage of consumables.

- IC Card Reader Activation Kit RG
- RISO Network Kit S10
- RISO Printer driver for Macintosh
- Envelope Feed Kit
Compatible with paper weight 13-lb bond to 32-lb bond (50 gsm to 120 gsm).

Specifications

Master Making/Printing Methods		High-speed digital master-making/Fully automatic printing
Original Type		Book or sheet
Master Making Time*1	Quick Master Making mode	Approx. 17 seconds (Letter, short-edge feed)
	Normal Master Making mode	Approx. 19 seconds (Letter, short-edge feed)
Resolution	Scanning	600 dpi × 600 dpi
	Printing	300 dpi × 600 dpi, Quick Master Making mode: 300 dpi × 400 dpi
Maximum Scanning Area		11 11/16 inches × 17 inches (297 mm × 432 mm)
Print Paper Weight		12-lb bond to 42-lb bond (46 gsm to 157 gsm)
Print Paper Size		3 15/16 inches × 5 13/16 inches to 12 7/32 inches × 17 inches (100 mm × 148 mm to 310 mm × 432 mm)
Maximum Printing Area		8 1/4 inches × 14 1/16 inches (210 mm × 357 mm)
Paper Feed Tray Stacking Capacity		1000 sheets*2, stacking height of 4 11/32 inches (110 mm) or lower
Paper Receiving Tray Stacking Capacity		1000 sheets*2, stacking height of 4 11/32 inches (110 mm) or lower
Print Speed		5 levels: 60, 80, 100, 120 and 130 ppm
Print Position Adjustment		Horizontal: ±19/32 inches, Vertical: ±13/32 inches (Horizontal: ±15 mm, Vertical: ±10 mm)
Image Processing Mode		Line, Photo, Duo, Pencil
Print Reproduction Ratio		Type: inch Zoom (50% to 200%), 100% reproduction ratio, 3 levels of enlargement (154%, 129%, 121%), 4 levels of reduction (94%, 78%, 65%, 61%) Type: mm Zoom (50% to 200%), 100% reproduction ratio, 3 levels of enlargement (141%, 122%, 116%), 4 levels of reduction (94%, 87%, 82%, 71%)
User Interface		LCD panel
Functions		Original Scanning Mode, Scanning Level, Enlargement/Reduction, Dot Process, 2-Up, Book, Ink Saving, Quick Master Making, ADF Semi-Auto*3, Speed, Density, Print Position, Program A/B, D-Feed Check, Slip Sheet Sorting, Job Separation*4, Idling, Confidential, Meter Display, Count Report Output, Proof, Direct Printing, USB Flash-via-Printing, Paper Memory Print, Auto Sleep Setting, Auto Power-OFF Setting, ECO Mode, RISO iQuality System
PC Interface		USB2.0, Ethernet:100BASE-TX, 10BASE-T*5
Ink Supply		Full automatic (1000 ml/cartridge)
Master Supply/Disposal		Full automatic (Legal: approx. 250 sheets per roll)/Disposal capacity: approx. 100 sheets
Power Source*6		AC 100-120 V 3.4 A, AC 220-240 V 1.6 A, 50-60 Hz
Power Consumption	Standard	Max.: 300 W, Ready: 20 W or lower, Sleep: 5 W or lower, Power-OFF: 0.5 W or lower
	Optional Accessories Connected*7	Max.: 315 W, Ready: 30 W or lower, Sleep: 10 W or lower, Power-OFF: 0.5 W or lower
Dimensions (W×D×H)	In use	55 23/32 inches × 26 3/8 inches*8 × 41 15/16 inches*9 (1415 mm × 670 mm*8 × 1065 mm*9)
	In storage	30 23/32 inches × 26 3/8 inches*8 × 41 15/16 inches*9 (780 mm × 670 mm*8 × 1065 mm*9)
Required Space (W×D×H)		55 23/32 inches × 48 13/16 inches × 59 21/32 inches*9 (1415 mm × 1240 mm × 1515 mm*9)
Weight		221 lb (100 kg)*10

*1 Measurement value when set to 100% reproduction ratio. *2 When using the following weight of paper; 17-lb bond to 21-lb bond (64 gsm to 80 gsm)


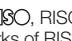
*3 Usable when the optional auto document feeder is installed. *4 Usable when the optional Job Separator is installed.

*5 RISO Network Kit S10 (optional) is required for connecting to the network. *6 To switch between 100-120 V and 220-240 V, contact your dealer or authorized representative.

*7 When all the following optional accessories are installed; Auto Document Feeder, Job Separator, IC Card Reader.

*8 The depth does not include the stabilizers for the dedicated stand. *9 The height includes the dedicated stand. *10 The weight does not include the ink, master roll, and stand.

Notes: The specifications are subject to change without prior notice.

 and  RISO i Quality System and RISO i Quality mark are trademarks or registered trademarks of RISO KAGAKU CORPORATION in the United States and other countries. Other corporate names and/or trademarks are either registered trademarks or trademarks of each company, respectively.
Copyright ©2019 RISO KAGAKU CORPORATION. All rights reserved.



RISO LATIN AMERICA, INC.
13680 NW 5th Street, Suite 100 - Sunrise, FL 33325
<http://www.risolatin.com/>

For more details please contact: