

Digital duplicator

# RISO SF5450 **ETU** U

**150** ppm High-speed printing

**300x600** dpi High-resolution

**Ledger** paper size

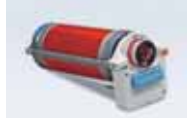
## *Speed Forward Edition II*



An upgraded print system for use in various settings

# RISO SF5450 EU U

## Optional Accessories



**RISO FII Type Drum**  
Enables color printing.  
(Case included)



**RISO Auto Document Feeder AF-VII**  
Scans multiple documents automatically.



**RISO Job Separator IV; NIII**  
Enables easy separation of printed sheets by inserting tape strips.



**Card Feed Kit**  
Compatible with paper weight 27-lb bond to 221-lb index (100 gsm to 400 gsm).  
\*Please contact a RISO sales representative for the kinds of paper that may be used.



**RISO Stand D Type III**  
Deluxe and with doors for convenient storage with a neat appearance.



**RISO Stand N Type III**  
Sturdy open-front stand also offers convenient storage of consumables.

- IC Card Reader Activation Kit RG
- RISO Printer driver for Macintosh
- Envelope Feed Kit  
Compatible with paper weight 13-lb bond to 32-lb bond (50 gsm to 120 gsm).

## Specifications

<b>Master Making/Printing Methods</b>		High-speed digital master-making/Fully automatic printing
<b>Original Type</b>		Book or sheet
<b>Master Making Time*1</b>	<b>Quick Master Making mode</b>	- Approx. 15 seconds (Letter, long-edge feed) - Approx. 17 seconds (Letter, short-edge feed)
	<b>Normal Master Making mode</b>	- Approx. 17 seconds (Letter, long-edge feed) - Approx. 19 seconds (Letter, short-edge feed)
<b>Resolution</b>	<b>Scanning</b>	600 dpi × 600 dpi
	<b>Printing</b>	300 dpi × 600 dpi, Quick Master Making mode: 300 dpi × 400 dpi
<b>Maximum Scanning Area</b>		11 11/16 inches × 17 inches (297 mm × 432 mm)
<b>Print Paper Weight</b>		12-lb bond to 116-lb index (46 gsm to 210 gsm)
<b>Print Paper Size</b>		3 15/16 inches × 5 13/16 inches to 12 7/32 inches × 17 inches (100 mm × 148 mm to 310 mm × 432 mm)
<b>Maximum Printing Area</b>		11 15/32 inches × 16 23/32 inches (291 mm × 425 mm)
<b>Paper Feed Tray Stacking Capacity</b>		1000 sheets*2, stacking height of 4 11/32 inches (110 mm) or lower
<b>Paper Receiving Tray Stacking Capacity</b>		1000 sheets*2, stacking height of 4 11/32 inches (110 mm) or lower
<b>Print Speed</b>		6 levels: 60, 80, 100, 120, 130, and 150 (High Speed*3) sheets per minute
<b>Print Position Adjustment</b>		Horizontal: ±19/32 inches, Vertical: ±13/32 inches (Horizontal: ±15 mm, Vertical: ±10 mm)
<b>Image Processing Mode</b>		Line, Photo, Duo, Pencil
<b>Print Reproduction Ratio</b>		Type: inch Zoom (50% to 200%), 100% reproduction ratio, 3 levels of enlargement (154%, 129%, 121%), 4 levels of reduction (94%, 78%, 65%, 61%) Type: mm Zoom (50% to 200%), 100% reproduction ratio, 3 levels of enlargement (141%, 122%, 116%), 4 levels of reduction (94%, 87%, 82%, 71%)
<b>User Interface</b>		LCD panel
<b>Functions</b>		Original Scanning Mode, Scanning Level, Enlargement/Reduction, Dot Process, 2-Up, Book, Ink Saving, Quick Master Making, ADF Semi-Auto*4, Speed, Density, Print Position, Program A/B, D-Feed Check, Slip Sheet Sorting, Job Separation*5, Idling, Confidential, Meter Display, Count Report Output, Proof, Direct Printing, USB Flash-via-Printing, Paper Memory Print, Auto Sleep Setting, Auto Power-OFF Setting, ECO Mode, RISO iQuality System
<b>PC Interface</b>		USB2.0, Ethernet:100BASE-TX, 10BASE-T
<b>Ink Supply</b>		Full automatic (1000 ml/cartridge)
<b>Master Supply/Disposal</b>		Full automatic (Ledger: approx. 215 sheets per roll)/Disposal capacity: approx. 100 sheets
<b>Power Source</b>		AC 100-240 V, 50-60 Hz <3.4-1.6 A>
<b>Power Consumption</b>	<b>Standard</b>	Max.: 300 W, Ready: 20 W or lower, Sleep: 5 W or lower, Power-OFF: 0.5 W or lower
	<b>Optional Accessories Connected*6</b>	Max.: 315 W, Ready: 30 W or lower, Sleep: 10 W or lower, Power-OFF: 0.5 W or lower
<b>Dimensions (W×D×H)</b>	<b>In use</b>	55 23/32 inches × 26 3/8 inches*7 × 41 15/16 inches*8 (1415 mm × 670 mm*7 × 1065 mm*8)
	<b>In storage</b>	30 23/32 inches × 26 3/8 inches*7 × 41 15/16 inches*8 (780 mm × 670 mm*7 × 1065 mm*8)
<b>Required Space (W×D×H)</b>		55 23/32 inches × 48 13/16 inches × 59 21/32 inches*8 (1415 mm × 1240 mm × 1515 mm*8)
<b>Weight</b>		223 lb (101 kg)*9

\*1 Measurement value when set to 100% reproduction ratio. \*2 When using the following weight of paper; 17-lb bond to 21-lb bond (64 gsm to 80 gsm)

\*3 If the temperature of the inside of the print drum (cylinder) is less than 41°F (5°C), [High Speed] is not usable. \*4 Usable when the optional auto document feeder is installed.

\*5 Usable when the optional Job Separator is installed. \*6 When all the following optional accessories are installed; Auto Document Feeder, Job Separator, IC Card Reader.

\*7 The depth does not include the stabilizers for the dedicated stand. \*8 The height includes the dedicated stand. \*9 The weight does not include the ink, master roll, and stand.

Notes: The specifications are subject to change without prior notice.

and RISO. RISO i Quality System and RISO i Quality mark are trademarks or registered trademarks of RISO KAGAKU CORPORATION in the United States and other countries. Other corporate names and/or trademarks are either registered trademarks or trademarks of each company, respectively.  
Copyright ©2019 RISO KAGAKU CORPORATION. All rights reserved.



**RISO LATIN AMERICA, INC.**  
13680 NW 5th Street, Suite 100 - Sunrise, FL 33325  
<http://www.risolatin.com/>

For more details please contact: