



Digital duplicator

RISO SF9450 **ET** U

150 ppm High-speed printing

600x600 dpi High-resolution

Ledger paper size

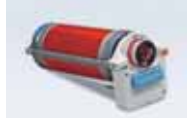
Speed Forward Edition II



An upgraded print system for use in various settings

RISO SF9450 EU U

Optional Accessories



RISO FII Type Drum
Enables color printing.
(Case included)



RISO Auto Document Feeder AF-VII
Scans multiple documents automatically.



RISO Job Separator IV; NIII
Enables easy separation of printed sheets by inserting tape strips.



Card Feed Kit
Compatible with paper weight 27-lb bond to 221-lb index (100 gsm to 400 gsm).
*Please contact a RISO sales representative for the kinds of paper that may be used.



Wide Stacking Tray
Allows use of paper up to 21 27/32 inches (555mm) on the long edge.



RISO Stand D Type III
Deluxe and with doors for convenient storage with a neat appearance.



RISO Stand N Type III
Sturdy open-front stand also offers convenient storage of consumables.

- IC Card Reader Activation Kit RG
- RISO Printer driver for Macintosh
- Envelope Feed Kit
Compatible with paper weight 13-lb bond to 32-lb bond (50 gsm to 120 gsm).

RISO iQualitySystem™



The RISO i Quality mark indicates a RISO product compatible with the RISO i Quality System.



RISO INK FII Type Color (1000 ml)



RISO MASTER FII Type (Ledger: 215 sheets)



RISO INK FII Type Black (1000 ml)

Specifications

Master Making/Printing Methods		High-speed digital master-making/Fully automatic printing
Original Type		Book or sheet
Master Making Time*1	Quick Master Making mode	- Approx. 15 seconds (Letter, long-edge feed) - Approx. 17 seconds (Letter, short-edge feed)
	Normal Master Making mode	- Approx. 17 seconds (Letter, long-edge feed) - Approx. 19 seconds (Letter, short-edge feed)
Resolution	Scanning	600 dpi × 600 dpi
	Printing	600 dpi × 600 dpi, Quick Master Making mode: 600 dpi × 400 dpi
Maximum Scanning Area		11 11/16 inches × 17 inches (297 mm × 432 mm)
Print Paper Weight		12-lb bond to 116-lb index (46 gsm to 210 gsm)
Print Paper Size*2		3 15/16 inches × 5 13/16 inches to 12 7/32 inches × 17 inches (100 mm × 148 mm to 310 mm × 432 mm)
Maximum Printing Area		11 15/32 inches × 16 23/32 inches (291 mm × 425 mm)
Paper Feed Tray Stacking Capacity		1000 sheets*3, stacking height of 4 11/32 inches (110 mm) or lower
Paper Receiving Tray Stacking Capacity		1000 sheets*3, stacking height of 4 11/32 inches (110 mm) or lower
Print Speed		6 levels: 60, 80, 100, 120, 130, and 150 (High Speed*4) ppm
Print Position Adjustment		Horizontal: ±19/32 inches, Vertical: ±13/32 inches (Horizontal: ±15 mm, Vertical: ±10 mm)
Image Processing Mode		Line, Photo (Standard/Portrait), Duo (Standard/Line/Photo/Shadow off), Pencil (Darker/Lighter)
Print Reproduction Ratio		Type: inch Zoom (50% to 200%), Free, 100% reproduction ratio, Margin+ (90% to 99%), 4 levels of enlargement (200%, 154%, 129%, 121%), 4 levels of reduction (78%, 65%, 61%, 50%) Type: mm Zoom (50% to 200%), Free, 100% reproduction ratio, Margin+ (90% to 99%), 4 levels of enlargement (163%, 141%, 122%, 116%), 4 levels of reduction (87%, 82%, 71%, 61%)
User Interface		Color touch panel
Functions		Image, Contrast, Size, Paper Size Detection, D-Feed Check, Dot Process, Contrast Adj., Tone Curve, Multi-Up Print, Book Shadow, Top Margin Adj., Binding Margin Adj., Max. Scan, Ink Saving, Quick Master Making, Preview, ADF Semi-Auto*5, Storage, Overlay, Print Speed Adj., Print Density Adj., Print Position Adj., Interval, Renew Page, Auto Page Renewal, Rotate, Special Paper Ctrl, Program, Slip Sheet Sorting, Job Separation*6, Job Memory, Reservation, Editor, Idling Action, Confidential, My Direct Access, Meter Display, ID Counter Report, Proof Copy, Direct Printing, USB Job List, Paper Memory Print, Scanning Mode, Admin., Auto Sleep, Auto Power-OFF, Power-OFF Schedule, ECO Mode, Protect, RISO iQuality System
PC Interface		USB2.0, Ethernet:100BASE-TX, 10BASE-T
Ink Supply		Full automatic (1000 ml/cartridge)
Master Supply/Disposal		Full automatic (Ledger: approx. 215 sheets per roll)/Disposal capacity: approx. 100 sheets
Power Source		AC 100-240 V, 50-60 Hz <3.4-1.6 A>
Power Consumption	Standard	Max.: 300 W, Ready: 20 W or lower, Sleep: 5 W or lower, Power-OFF: 0.5 W or lower
	Optional Accessories Connected*7	Max.: 315 W, Ready: 30 W or lower, Sleep: 10 W or lower, Power-OFF: 0.5 W or lower
Dimensions (W×D×H)	In use	55 23/32 inches × 26 3/8 inches*8 × 41 15/16 inches*9 (1415 mm × 670 mm*8 × 1065 mm*9)
	In storage	30 23/32 inches × 26 3/8 inches*8 × 41 15/16 inches*9 (780 mm × 670 mm*8 × 1065 mm*9)
Required Space (W×D×H)		55 23/32 inches × 48 13/16 inches × 59 21/32 inches*9 (1415 mm × 1240 mm × 1515 mm*9)
Weight		225 lb (102 kg)*10

*1 Measurement value when set to 100% reproduction ratio.

*2 When the optional Wide Stacking Tray is installed, you can use paper up to a size of 12 7/32 inches x 21 27/32 inches (310 mm x 555 mm) by setting [Custom Paper Entry].

Depending on the paper type and paper size, papers may not be aligned properly.

*3 When using the following weight of paper; 17-lb bond to 21-lb bond (64 gsm to 80 gsm) *4 If the temperature of the inside of the print drum (cylinder) is less than 41°F (5°C), [High Speed] is not usable.

*5 Usable when the optional auto document feeder is installed. *6 Usable when the optional Job Separator is installed. *7 When all the following optional accessories are installed; Auto Document Feeder, Job Separator, IC Card Reader.

*8 The depth does not include the stabilizers for the dedicated stand. *9 The height includes the dedicated stand. *10 The weight does not include the ink, master roll, and stand.

Notes: The specifications are subject to change without prior notice.

and RISO. RISO i Quality System and RISO i Quality mark are trademarks or registered trademarks of RISO KAGAKU CORPORATION in the United States and other countries. Other corporate names and/or trademarks are either registered trademarks or trademarks of each company, respectively.
Copyright ©2019 RISO KAGAKU CORPORATION. All rights reserved.

For more details please contact:



RISO LATIN AMERICA, INC.
13680 NW 5th Street, Suite 100 - Sunrise, FL 33325
<http://www.risolatin.com/>